

July 2010

MAP REFERENCE HANDBOOK

Building & Land
Use Inventory

The District, Columbia, Missouri



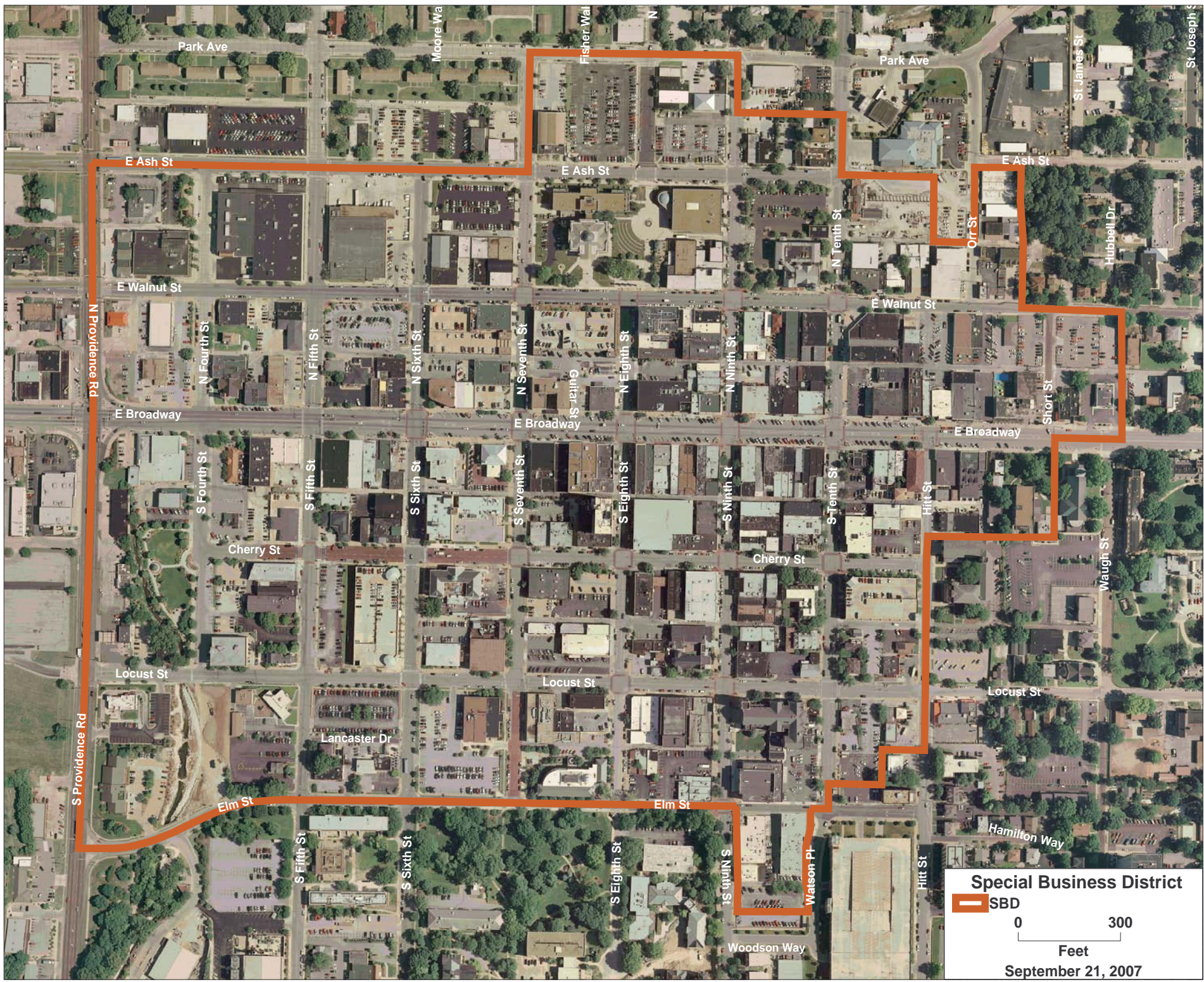
MAP REFERENCE HANDBOOK

Building & Land Use Inventory


The series of maps contained in this handbook are the result of a land use and building survey conducted by the City of Columbia in 2009. The Columbia Special Business District (SBD) is roughly bordered by the three colleges and Providence Road. Specifically, the area is defined by Waugh to the east, Park and Ash to the north, Elm and Woodson to the south and Providence to the west. The SBD is comprised of 43 city blocks and 300 parcels covering approximately 76 acres. Also included within the SBD are over 650 businesses and institutions. Several of the maps also outline the area surrounding the SBD, including the residential areas.

Maps include:

1. **Aerial** – An aerial photo outlining the Columbia Special Business District boundaries.
2. **Central City Zoning** – This map provides specifics on the various types of zoning within the SBD.
3. **Central City Ownership** – The Ownership Map outlines the various property owners within the SBD, including the institutional owners. Detailed information regarding specific properties is available by contacting the *District* office.
4. **Land Use Status** – The Land Use Status Map highlights development opportunities by classifying parcels as a hard, soft or transitional use.
5. **Central City Parking** – The Central City Parking Map shows the location of both public and private parking lots and garages.
6. **National Register Districts & Buildings** – This map shows the location of buildings and areas currently on the National Register of Historic Places.



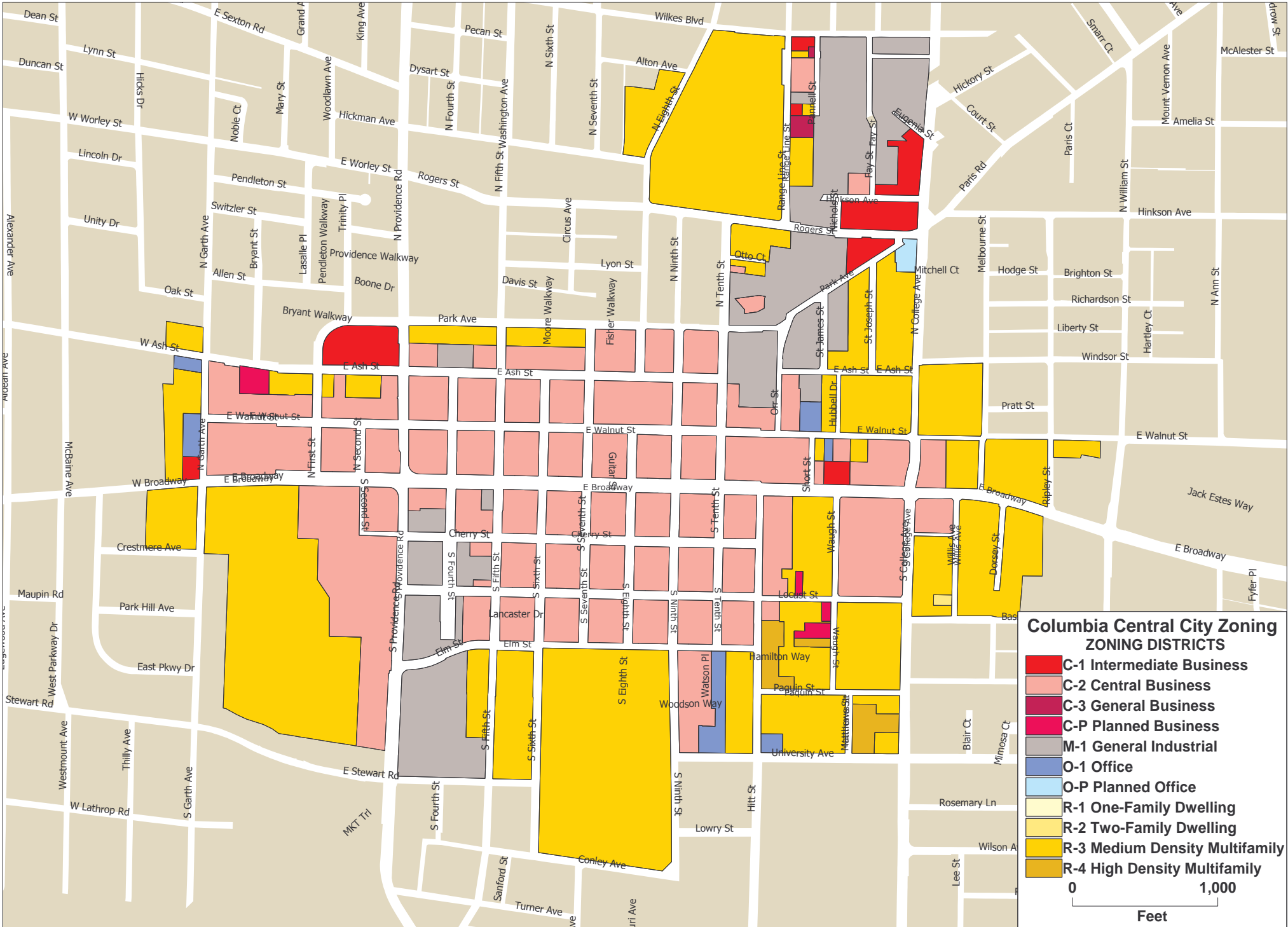
Special Business District

 SBD

0 300

Feet

September 21, 2007



**Columbia Central City Zoning
ZONING DISTRICTS**

- C-1 Intermediate Business**
- C-2 Central Business**
- C-3 General Business**
- C-P Planned Business**
- M-1 General Industrial**
- O-1 Office**
- O-P Planned Office**
- R-1 One-Family Dwelling**
- R-2 Two-Family Dwelling**
- R-3 Medium Density Multifamily**
- R-4 High Density Multifamily**

0 1,000

Feet

